



**Application: Port Terminal Handling Iron-Ore
@11000 TPH**

Belt Widths Ranging from 1000 mm to 2200 mm

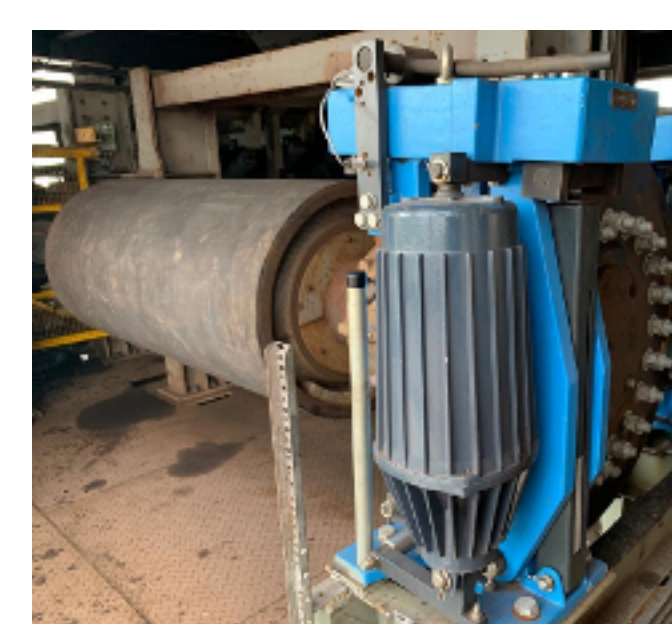
Conveyor Speed: 5.4 meters per second

**Typical size of Pulley: 1400 dia X 1800 FW X 400 dia
bearing size fitted with Locking
Assembly**

**Idler sizes varying from 159 dia X 45 dia bearing size x
670 mm FW to 2000 mm FW**



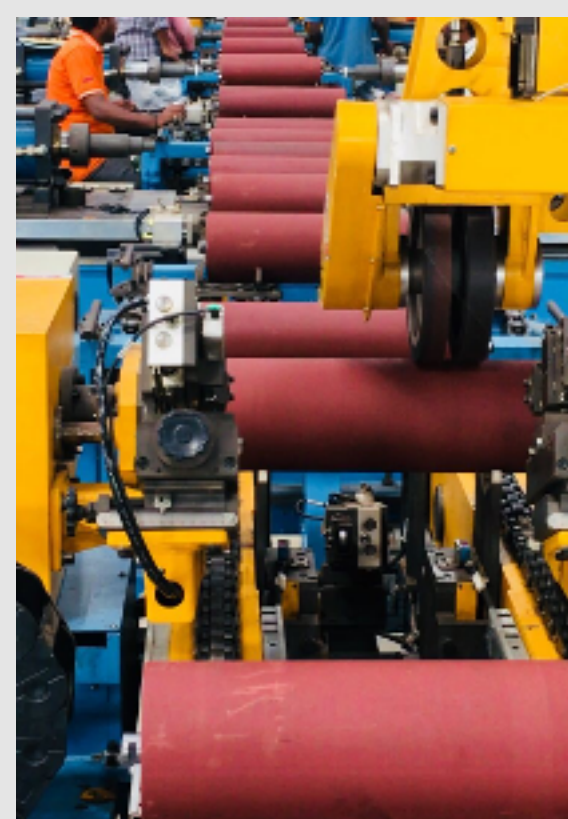
Be'RolleX has attained a benchmark by manufacturing and supplying Pulleys and Idlers for one of the highest capacity Belt Conveyors in India





Automated Production line equipped with Robotics Technology produces idlers ensuring consistency in quality and reliability.

Built over 20,000 sq. Mtrs, the plant has capacity to produce over 350,000 rollers of all ranges in a year, meeting Indian and International standard specifications.



Various pulleys such as key-way, turbine and T-Bottom are produced using automated welding machines to ensure consistency in quality and avoiding human intervention.

Pulleys are manufactured using internally developed design softwares and leveraging technology to optimize cost and performance in real time application.

